

RP70A *Truly Pocketable 7 inch Android Tablet*





1. RP70A Intro

“The RP70A is 7 inch professional rugged tablet running with Android 8.1 Oreo. It is born to establish a new form factor between handy smartphone and tablet PC.

More and more, professionals require larger display terminals while keeping compact and light weight design.

Maximizing portability, 7 inch is perfect size for professionals to view PDF document and enter data conveniently in the field. The RP70A is as light as 600 grams and 18mm thin, smoothly slipped into pocket of professionals’ uniform.

2. Design

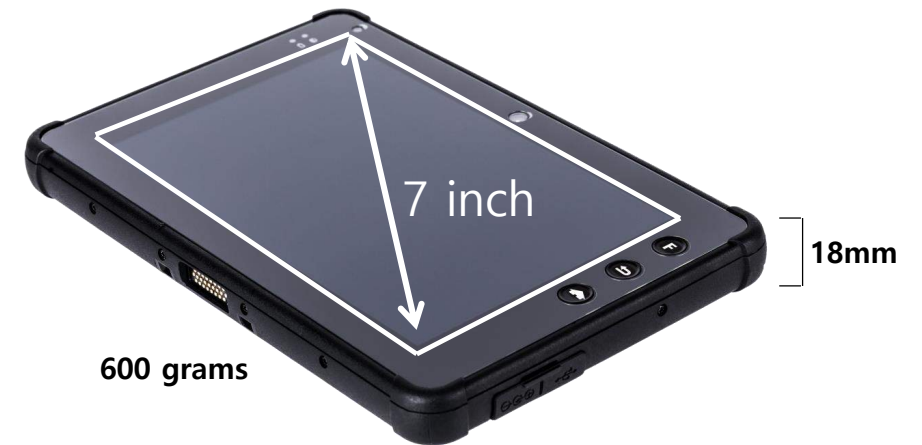
Truly Handy and Pocketable



Pocketable Size

RP70A has 18mm thickness competitively slimmer than average rugged tablet PC. With light weight of 600 grams, it provides utmost portability and can be slipped smoothly into the pocket of professionals' uniform.

7 inch display is perfect for professionals to view PDF document and enter data conveniently in the field.



2. Design

Born to Survive in Extreme Environment

Anti-shock resistant : 1.2 meter drop certified

IP 65 sealing

Operating Temperature of $-20^{\circ}\text{C} \sim +60^{\circ}\text{C}$

Anti Shock Resistant



Four edge rubber bumper



Reliable hardware keys





Rainmode

Rainmode enables RP70A to sense precise point of your finger during rain, and snow without erroneous input.



Your outdoor tablet



2. Design



Your indoor PC



2. Design

Professional Vehicle Cradle with wide extension capabilities
USB 2.0 A type Host 3ea, HDMI 2.0 1ea, Serial 1ea, Ethernet 1ea
Flexibility of Customization



3. Advantages

**(1) Excellent Outdoor Readability,
even in direct and sharp sunlight**

3. Advantages



(2) Fine tip stylus with Highly Responsive Display

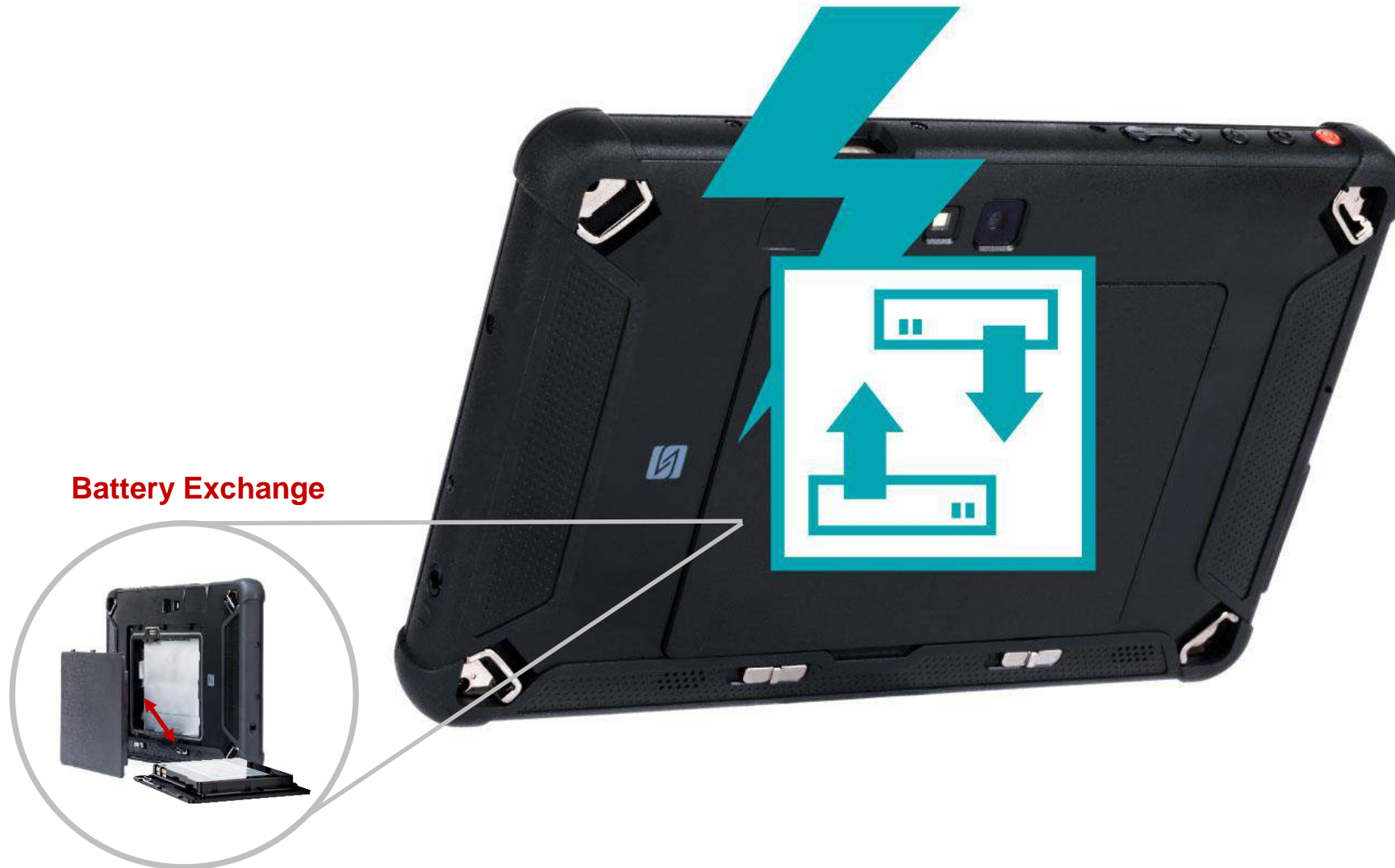
3. Advantages

The highly responsive touch screen enables precise and accurate point on the screen
The fine tip stylus is perfectly working especially in GIS (Geographic Information System) applications.



(3) Hot Swappable Battery

3. Advantages



(4) The latest powerful platform
Android 8.1 Oreo with
1.8GHz Hexa-core Processor
RAM 4GB / ROM32GB (64GB / 128 GB Optional)



(5) Built-in Professional 2D Imager and NFC Reader Scanner (Honeywell) and NFC Reader



3. Advantages



(6) Professional Scan Emulator

3. Advantages

Scanner Setting

-Auto Start: Starts automatically as soon as tablet OS starts
-Auto Scan: Scan mode which enables you to scan without pressing function button

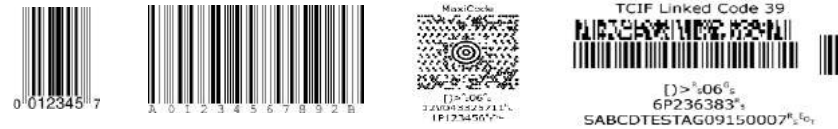
Scan Prefix / Suffix

Prefix:

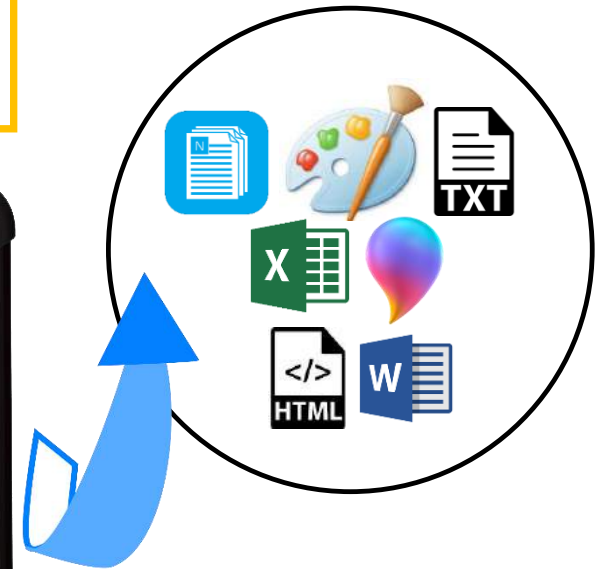
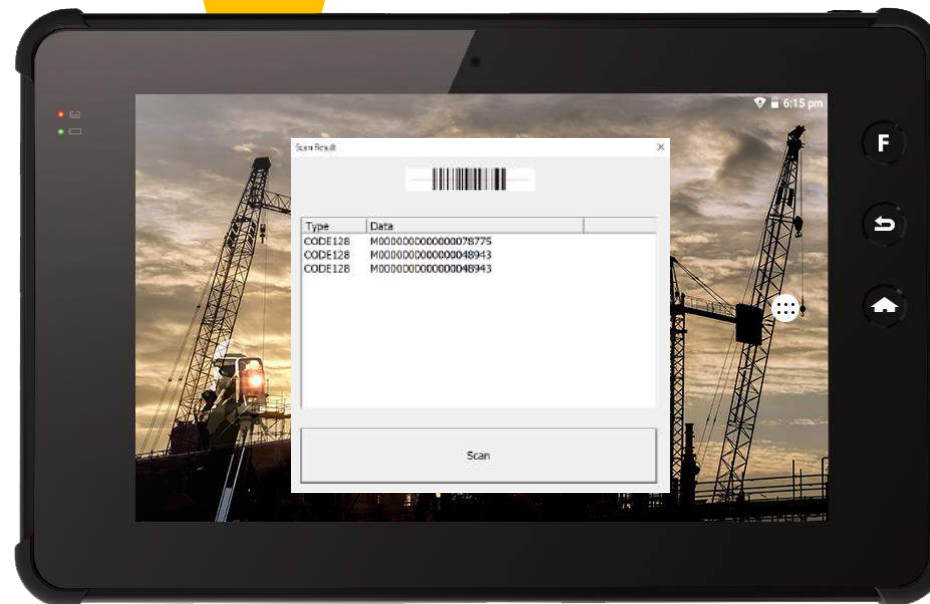
Suffix:

\r: Return Key
\b: Backspace key
\t: Horizontal tab
\: \

Scanned Barcode Editing



All Types of Barcode (2D Imager)



(7) Autoseup

Autoseup has easy UI to pre-stage RP70A settings such as ethernet setting, mobile APN, hardware keys, key mapping ..etc. You can install several RP70A at once with Autoseup.

The image illustrates the Autoseup process on a tablet. On the left, the 'INI EDIT' window shows configuration options for 'Radio auto on/off': Bluetooth auto (Enable), Wifi auto on (Disable), and Reset type (all boots). On the right, the 'G2W_PC_Android_Setup' window displays a 'Dialog' box with a QR code. A red cone from the QR code points to a callout labeled '2D Imager or Camera'. Below the callout, a list of steps describes the process: 1. Scan QR code, 2. Automatic connection to FTP server, 3. Automatic download for Auto Setup & APK, 4. Automatic installation.

1. Scan QR code
2. Automatic connection to FTP server
3. Automatic download for Auto Setup & APK
4. Automatic installation

(8) Easy Key Mapping & Intuitive UI

You can remap the 6 different hardware keys of RP70A instantly. Gen2Wave offers convenient UI for Key Mapping. You can also mass-set and map number of RP70s' keys with Autosetup.



(9) Screenlock Mode

Keep your work and programs safe while your concentration is away from RP70A.
Screenlock mode keeps your work on process, while preventing erroneous input.



4. Specification

Performance Characteristics

CPU	1.8GHz Hexa-core Rockchip RK3399 Cortex A72 Dual-Core (1.8GHz) Cortex A53 Quad-Core (1.4GHz)
OS	Android 8.1 Oreo
Memory	4 GB DDR3L-1600MHz 32GB EMMC (64GB/128GB optional)
Communication Interface	Tablet Side : USB3.0 Host, USB2.0 Client Desktop Cradle Interface : USB 2.0 A type Host 3ea, HDMI 2.0 1ea, Serial 1ea, Ethernet 1ea Extension 10pin connector : supporting USB and Serial interface

Battery(5600mA) Performance

Standby Time	100 hours / 5,600mAh standard battery
Video Streaming Time	5 hours / 5,600mAh standard battery 8 hours / 10,050mAh extended battery (keep turning on the LCD module and the communication module)
Charging time	5 hours / 5,600mAh standard battery 6.5 hours / 10,050mAh extended battery

Physical Characteristics

Dimensions	203mm (W) X 131mm (H) X 18mm (D)
Weight	600 gram(21.1oz) with 5,600mAH standard battery
Display	7 Inch / WXGA (800x1280), 700 nits (cd/m ²)
Input	3 Front keys, 5 Side keys (Including 2 programmable keys)
Battery	Standard : 5,600mA/h, 3.7V, Li-polymer Extended : 10,050mA/h, 3.7V, Li-ion polymer
Expansion Slot	MicroSDXC / Up to 2 TB cards supported
Audio	Dual Speaker / Receiver / MIC 4G LTE / HSPA+ / GSM / GPRS
Wireless (WWAN)	EU Frequency band (USA optional) 4G LTE : 800, 900, 1800, 2100, 2600MHz 3G HSPA+ : 900, 2100MHz 2G GSM/GPRS : 900, 1800MHz
Bluetooth	Bluetooth 4.2 BLE + HS (BT Headset support)
Wireless LAN	IEEE 802.11 a/b/g/n/ac
GPS	Embedded A-GPS, GLONASS (optional)
Notification	Charging status LED, Power on/off LED
Scanner	2D Imager (Honeywell N6603SR)

User Environment

Sealing	IP65
Drop Spec.	1.2M drop to concrete. 2 drops per 6 sides
Operating Temperature	-20 °C ~ +60 °C
Storage Temperature	-30 °C ~ +70 °C
AC Power	Input : AC 100 ~ 240V, 50 ~ 60Hz Output : DC +5.0V, 5A
Relative Humidity	Non-condensing, 93%

Camera

Resolution	13.0 megapixel with Auto Focus (Rear Camera) 2.0 megapixel with Fixed Focus (Front Camera)
Illumination	User controllable flash
Lens	Auto Focus (Rear Camera)

Interactive Sensor Technology

Motion-sensor: 3-axis accelerometer that enables motion-sensing applications for dynamic screen orientation
Ambient light sensor : To adjust the screen brightness automatically based on the available light.

2D Image Scanner (Honeywell N6603SR, H/W Decoder)

Sensor	CMOS sensor with 844 x 640 pixel resolution
Illumination and Aiming	White LED illumination (exempt risk group)
Typical Frame Rate	60 frames per second
Motion Tolerance	Up to 584cm/s with 100% UpC at 10cm(4") distance
Field of view	Horizontal 42.4°, Vertical 33°
Scan Angles	Tilt: 360°, Pitch $\pm 45^\circ$, Skew: $\pm 60^\circ$
Symbol Contrast	20% minimum reflectance

Standard Reading Range

SYMBOLGY	*TYPICAL RANGE
100% UPC	46 mm to 419 mm (1.8 in to 16.5 in)
5MIL CODE 39	64 mm to 163 mm (2.5 in to 6.4 in)
10MIL CODE 39	28 mm to 338 mm (1.1 in to 13.3 in)
6.7MIL PDF417	46 mm to 185 mm (1.8 in to 7.3 in)
10MIL DATA MATRIX	53 mm to 203 mm (2.1 in to 8.0 in)

* Typical performance may be impacted by barcode quality and environmental conditions

Peripherals and Accessories

Desktop cradle (1slot)

Device charging slot / 1ea
Additional battery charging slot / 1ea
Ethernet port / 1ea
HDMI 2.0 Full size type A / 1ea
USB Host 2.0 / 3ea
Serial RS232C / 1ea

Car Cradle

Device charging slot / 1ea
Ethernet port / 1ea
HDMI 2.0 Full size type A / 1ea
USB Host 2.0 / 2ea
Serial RS232C / 1ea
Power input (DC-IN) / 1ea

Electrical Safety:

IEC 60950-1: 2005 (2nd Edition) and/or EN
60950-1:2006

EMI/RFI:

EN 55022:2006 Class B
EN 61000-3-2:2006
EN 61000-3-3:1995 +A1:2001+A2:2005

5. Application

Field Service

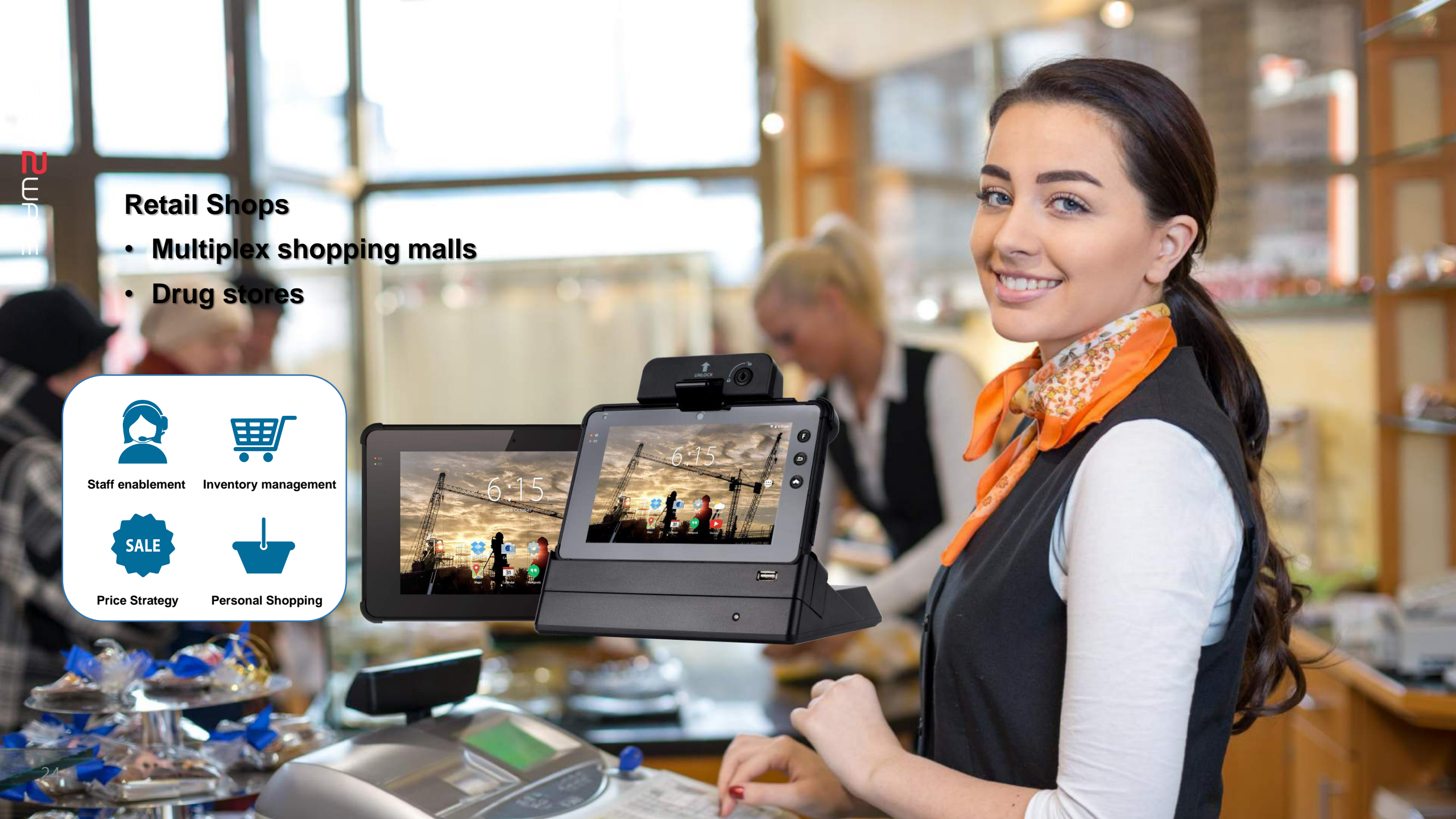


Retail Shops

- Multiplex shopping malls
- Drug stores

Staff enablement Inventory management

Price Strategy Personal Shopping



Transportation

Courier Express Parcel

Retail Distribution

Mail Courier Service

Mass Transport



Warehouse Management



Receiving



Put-Away &
Replenishment



Inventory



Picking





Sales Force Automation
RP70A works 24/7 for speedy process

Law Enforcement

Traffic Law Enforcement

Parking Law Enforcement

Patrol Mobile Solution



6. Accessories & Package

Names	Description	Image
Standard Accessories	<p>AC line cord & Power supply Stylus pen, Pen string Hand Strap</p>	
Battery	<p>Li-ion Polymer Battery</p> <p>Standard 3.7V 5600mAH Extended 3.7V 10050mAH</p>	
Professional Desktop Cradle	<p>Device charging slot, Additional battery charging slot, 3ea USB Host 2.0, A type HDMI 2.0 Full size A type, Serial RS232C Ethernet port</p> <p>Lock to place tablet with stability Key to keep tablet safe.</p>	 <p>USB Port Ethernet Port HDMI Serial Port DC Jack</p>
Professional Car Cradle	<p>Device charging slot Cigar plug input power, Direct Input power, USB Host 2.0, A type HDMI 2.0 Full size type A Serial RS232C Ethernet port</p> <p>Lock to place tablet with stability Key to keep tablet safe. Two wheels to adjust angles of Display</p>	